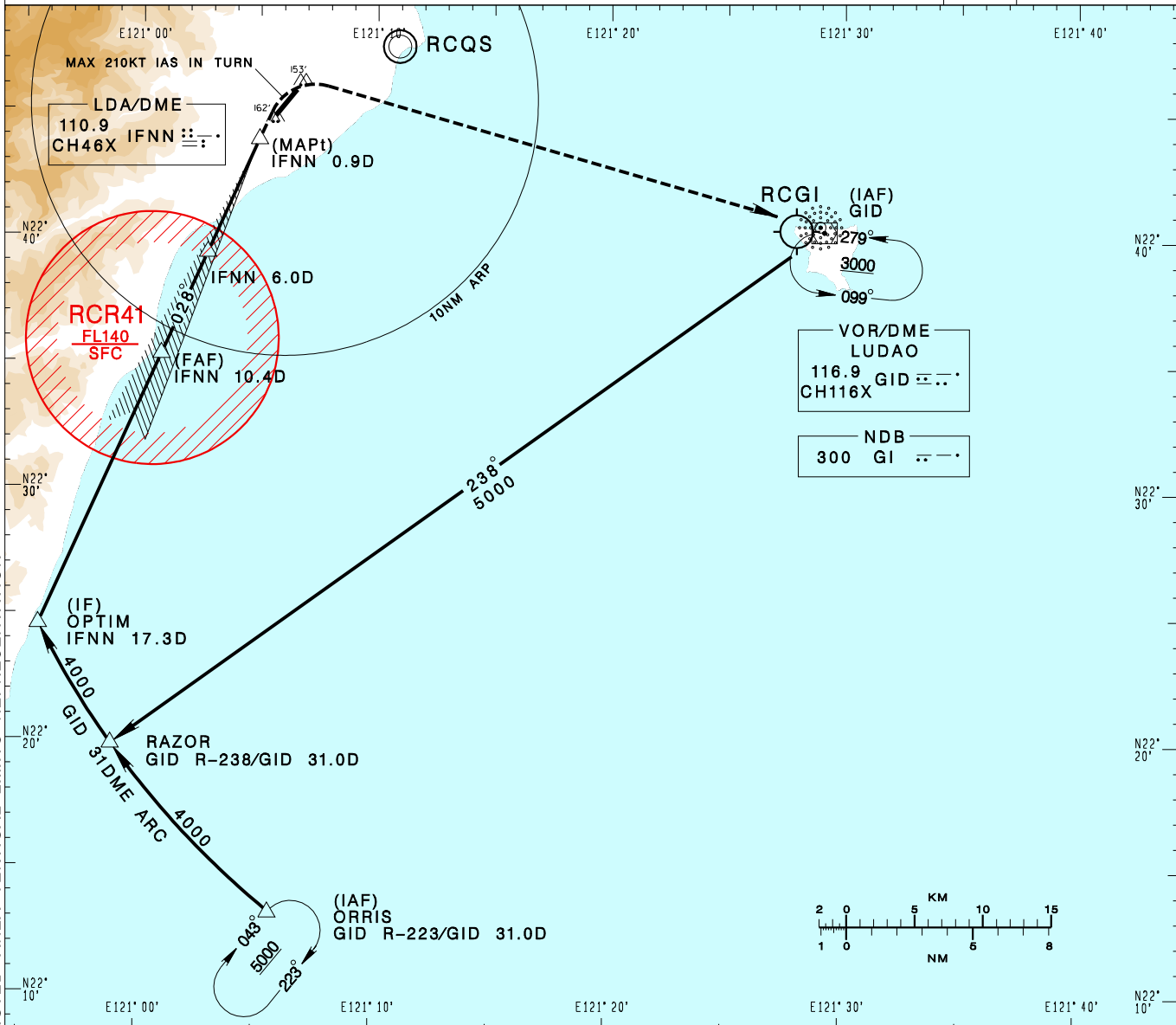


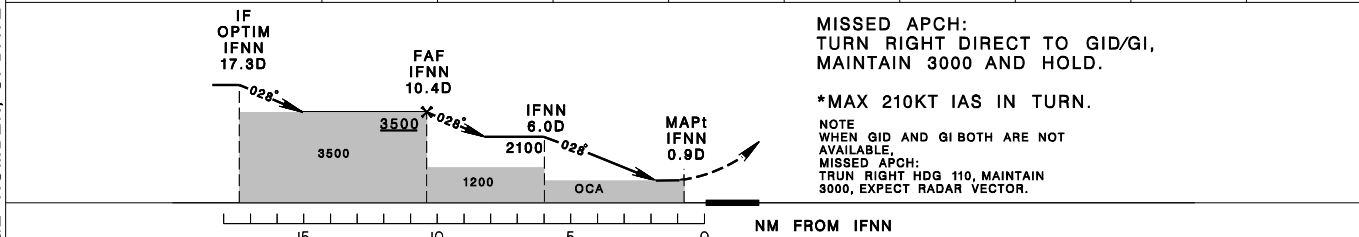
臺東/豐年機場
TAITUNG/FONGNIAN AD

RCFN
LDA RWY04

KAOHSIUNG APP 119.4 228.2	FONGNIAN TWR 118.1 236.6	ATIS 127.0	
Apt Elev: 143' Rwy04 THR Elev: 143' Trans Level: FL130 Trans Alt: 11,000'			
BEARINGS ARE MAGNETIC; DISTANCES ARE NAUTICAL MILES; ELEVATIONS, HEIGHTS IN FEET			



DIST to IFNN	10DME	9DME	8DME	7DME	6DME	5DME	4DME	3DME	2DME
ADVISORY ALT	3400	3080	2760	2440	2120	1800	1480	1170	850



MINIMA (OCA IN FT, VIS IN M, OCH IN FT)					<p>NOTE</p> <ol style="list-style-type: none"> 1. CIRCLING NOT AUTHORIZED. 2. THE FINAL APCH COURSE IS OFFSET FROM LANDING RUNWAY BY 15 DEG. 3. CAUTION HIGH TERRAIN ALONG THE APCH COURSE. 4. THE APCH COURSE INFRINGES RCR41 AREA, PRIOR COORDINATION WITH ROCAF WILL BE COMPLETED BY ATC BEFORE ISSUING CLEARANCE DURING RCR41 ACTIVE HOURS. <p>* DME REQUIRED</p>
CATEGORY	A	B	C	D	
STRAIGHT IN	580/1200 RVR1200 437		580/1300 RVR1200 437		
STRAIGHT IN (ALS OUT)	580/1600 437		580/2000 437		